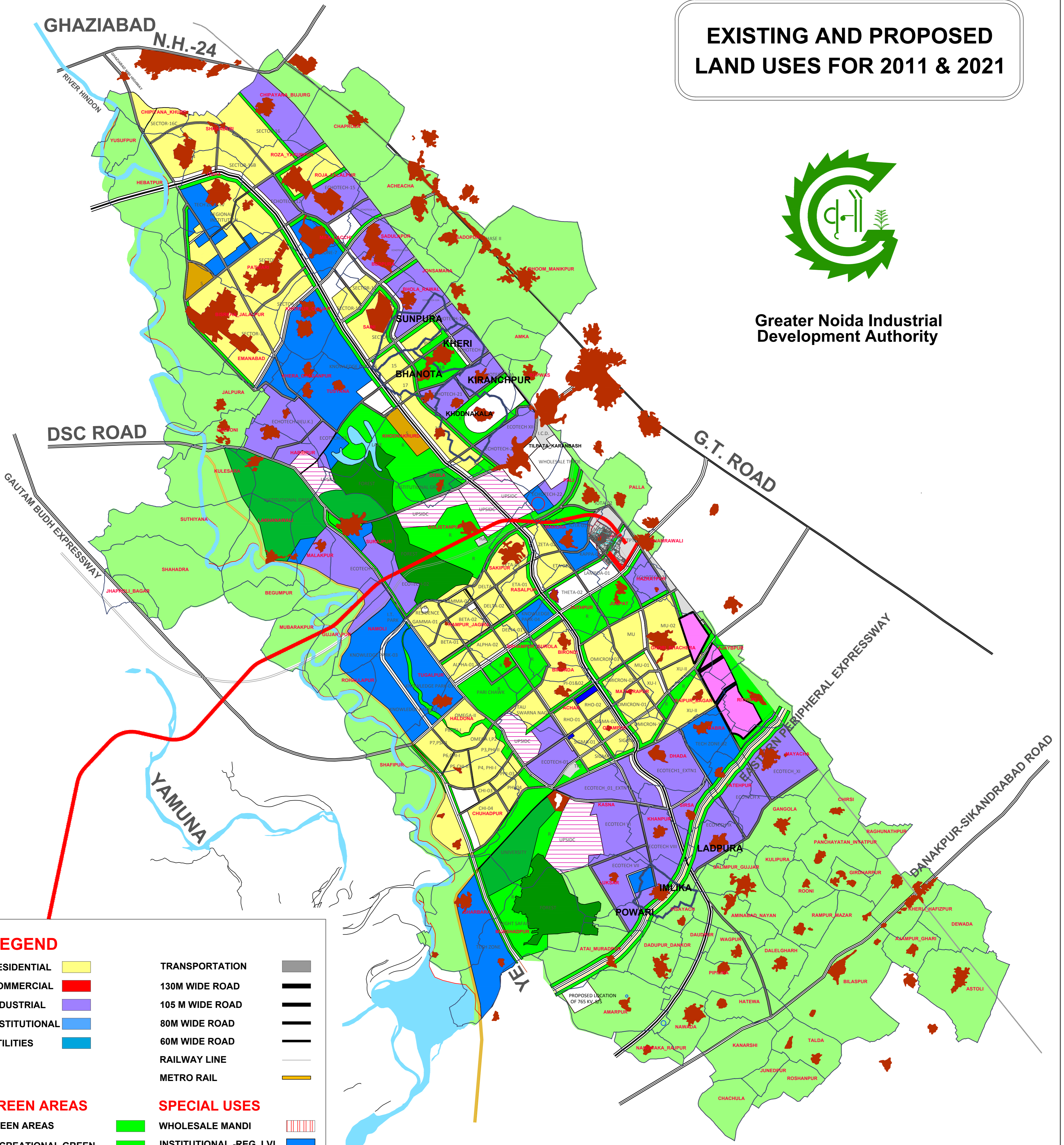


# EXISTING AND PROPOSED LAND USES FOR 2011 & 2021



Greater Noida Industrial Development Authority



## LEGEND

|                        |  |                         |  |
|------------------------|--|-------------------------|--|
| <b>RESIDENTIAL</b>     |  | <b>TRANSPORTATION</b>   |  |
| <b>COMMERCIAL</b>      |  | 130M WIDE ROAD          |  |
| <b>INDUSTRIAL</b>      |  | 105 M WIDE ROAD         |  |
| <b>INSTITUTIONAL</b>   |  | 80M WIDE ROAD           |  |
| <b>UTILITIES</b>       |  | 60M WIDE ROAD           |  |
|                        |  | RAILWAY LINE            |  |
|                        |  | METRO RAIL              |  |
| <b>GREEN AREAS</b>     |  | <b>SPECIAL USES</b>     |  |
| GREEN AREAS            |  | WHOLESALE MANDI         |  |
| RECREATIONAL GREEN     |  | INSTITUTIONAL -REG. LVL |  |
| INSTITUTIONAL GREENS   |  | VILLAGE ABADI           |  |
| NURSERY & HORTICULTURE |  | SEZ                     |  |
| RESERVED FOREST        |  | SPORT CITY              |  |
| AGRICULTURAL           |  | USE UNDEFINED           |  |
| UPSIDC                 |  | PHASE -I-2001           |  |
|                        |  | PHASE -II-2011          |  |